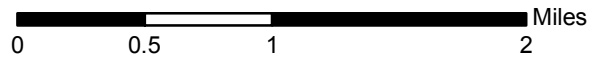


# Soil Burn Severity

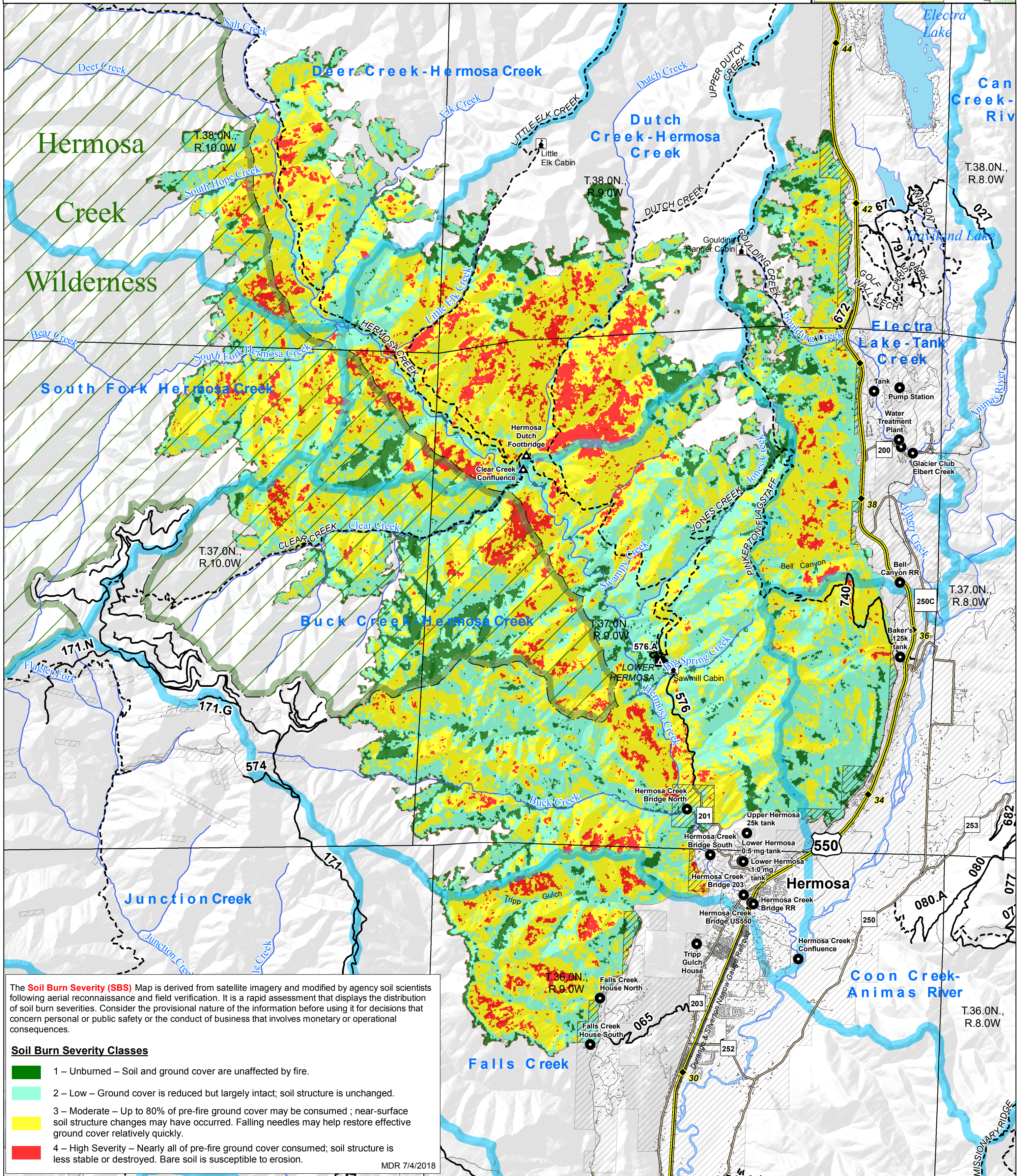
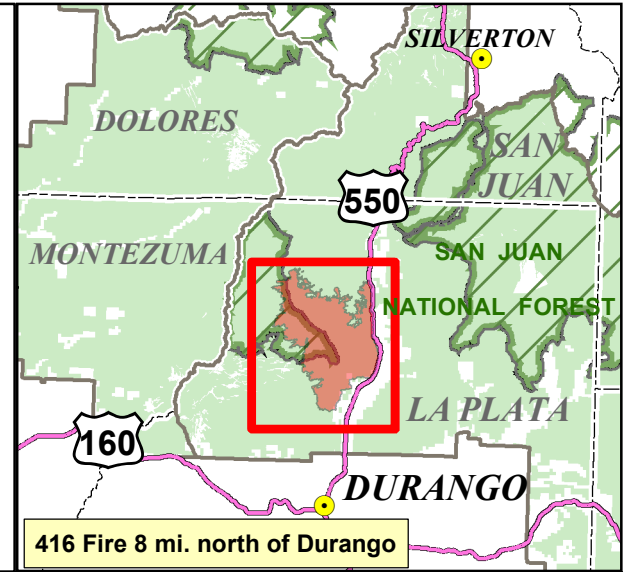
## 416 BAER

Columbine Ranger District  
San Juan National Forest  
July 4, 2018



**Legend**

- 416 Fire Perimeter  
*As of 6/21/2018 for this initial BAER assessment.*
- Dutch HUC 12 Watershed
- Private Land
- Hermosa National Forest System Trail
- 171 National Forest System Road
- Forest Service Cabin
- ▲ Value At Risk (FS)
- Value At Risk - Other Jurisdiction
- Wilderness
- 40 Mile Marker
- 550 Highway
- 204 County Road



The **Soil Burn Severity (SBS)** Map is derived from satellite imagery and modified by agency soil scientists following aerial reconnaissance and field verification. It is a rapid assessment that displays the distribution of soil burn severities. Consider the provisional nature of the information before using it for decisions that concern personal or public safety or the conduct of business that involves monetary or operational consequences.

**Soil Burn Severity Classes**

- 1 – Unburned – Soil and ground cover are unaffected by fire.
- 2 – Low – Ground cover is reduced but largely intact; soil structure is unchanged.
- 3 – Moderate – Up to 80% of pre-fire ground cover may be consumed ; near-surface soil structure changes may have occurred. Falling needles may help restore effective ground cover relatively quickly.
- 4 – High Severity – Nearly all of pre-fire ground cover consumed; soil structure is less stable or destroyed. Bare soil is susceptible to erosion.