

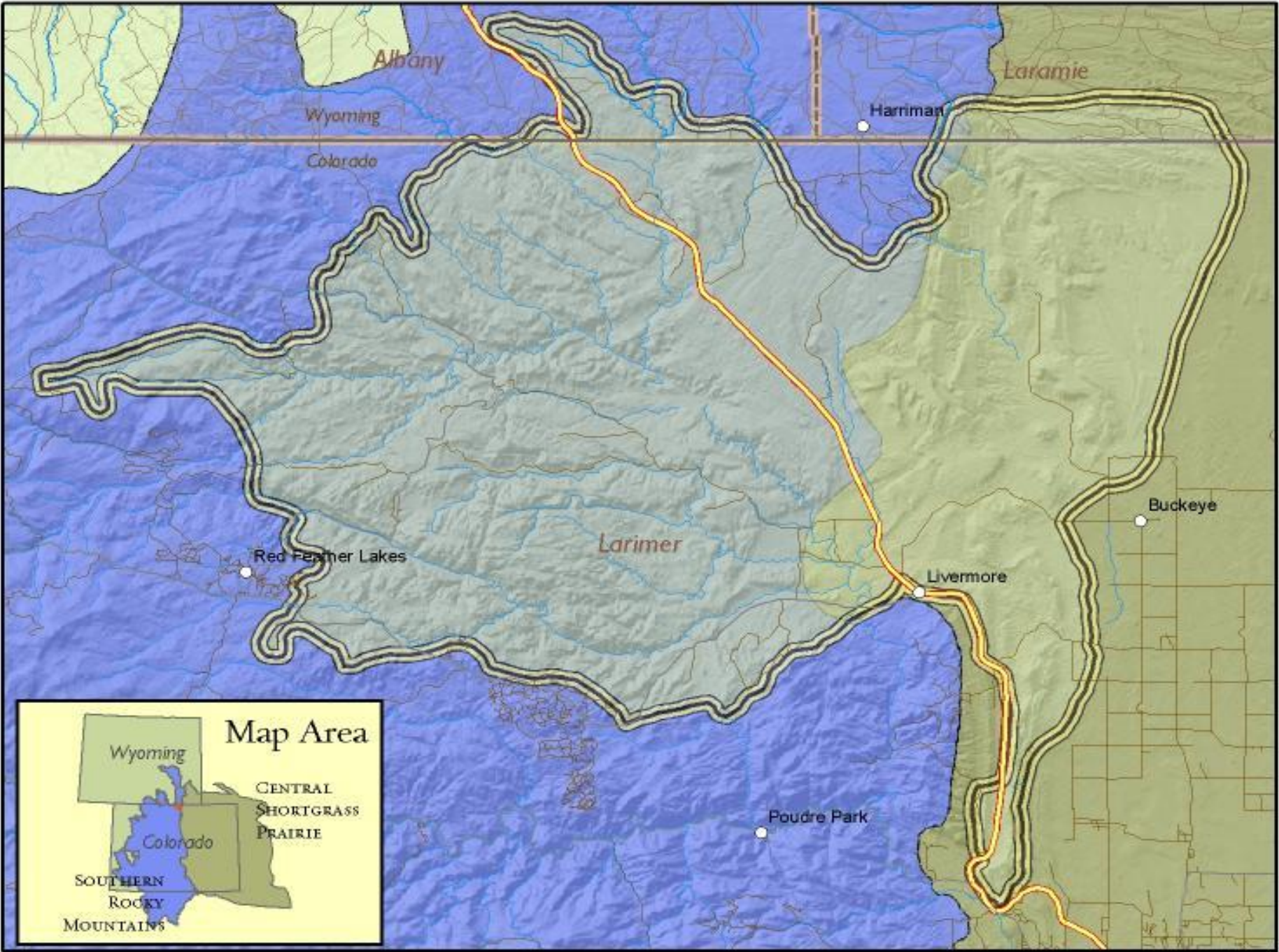
If you want to go fast,
Go Alone.

If you want to go far,
Go Together.



Connecting for Conservation
Durango, Colorado, May 2018

Laramie Foothills Conservation Project



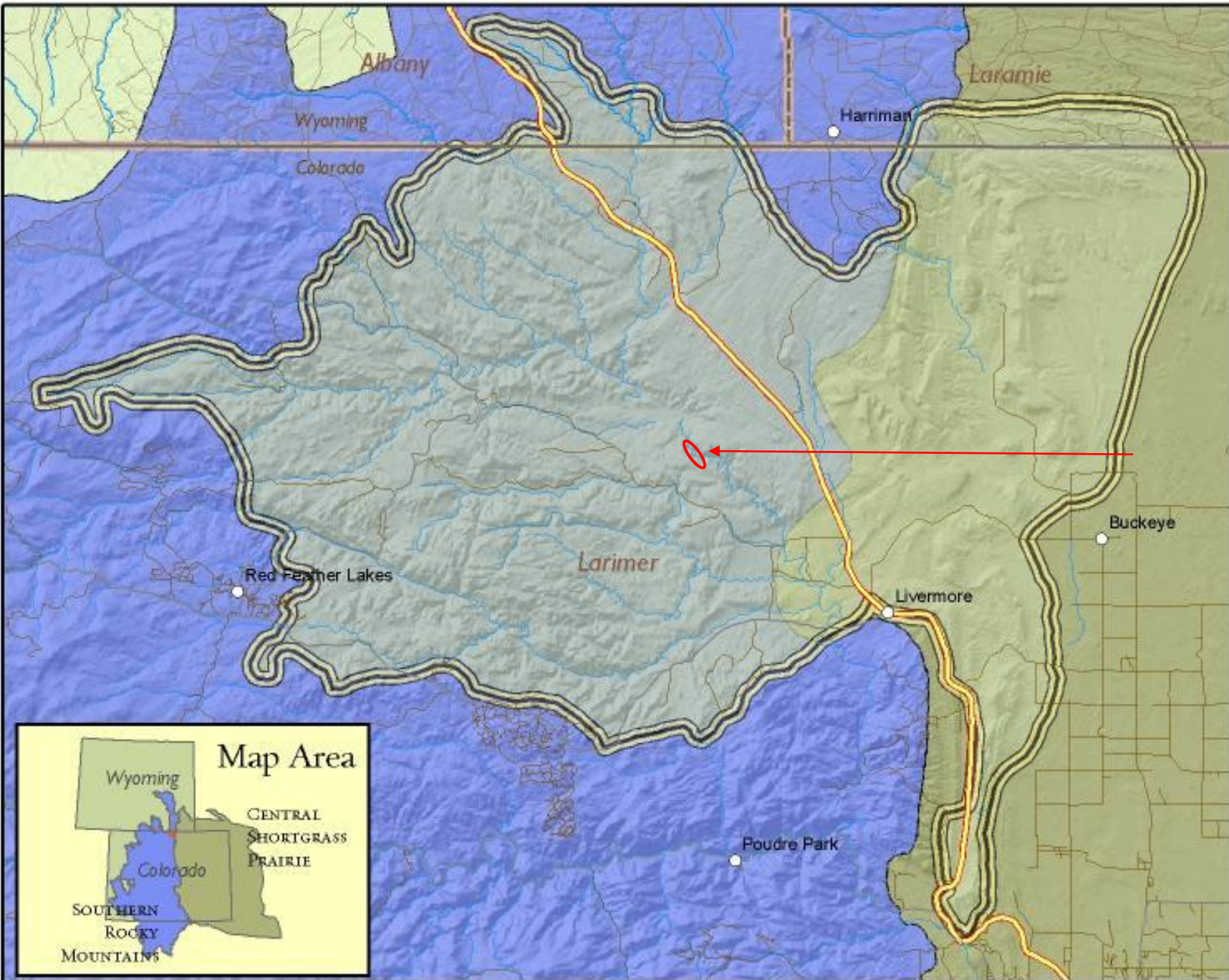






Question #1

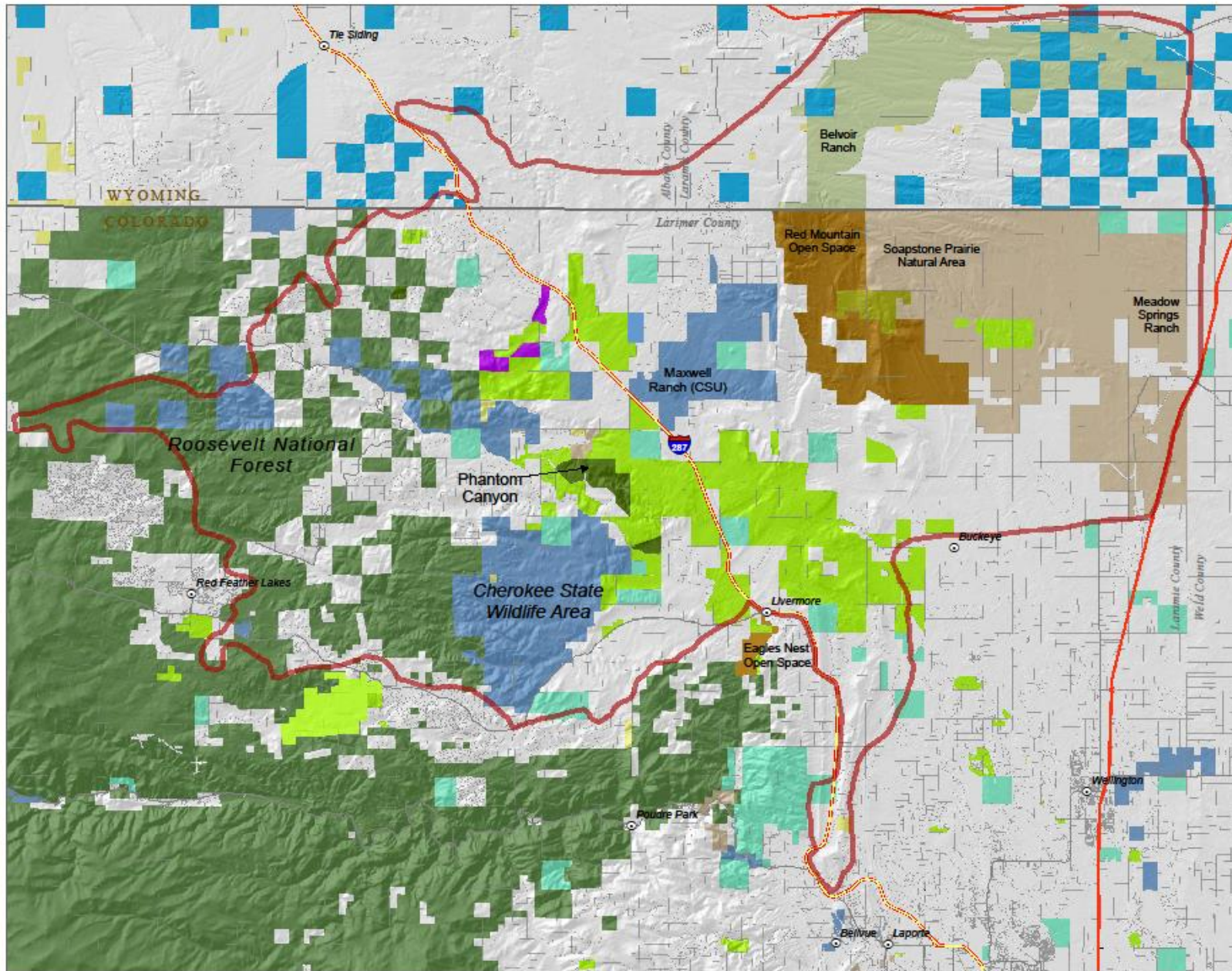
How could we expand the ecological effect of a small natural area while minimizing social & economic costs to us and to the community ?



TNC's Phantom Canyon Preserve



Laramie Foothills Project Area



Legend

Laramie Foothills Conservation Area

Hydrography

U.S. Geological Survey, 1999. National Hydrography Dataset (NHD) - Medium Resolution. U.S. Geological Survey, Reston VA.

- Water body
- Stream/River - Intermittent
- Stream/River - Perennial

Public Land Ownership

COMaP v7 2008. USGS National GAP Analysis Program, 2004. Provisional Digital Landcover Dataset for the Southwestern United States, version 1.0. RS/GIS Laboratory, College of Natural Resources, Utah State University.

- Bureau of Land Management (BLM)
- Forest Service (USFS)
- State Land Board
- State Land
- City of Fort Collins (CO)
- Larimer County (CO)
- City of Cheyenne (WY)

Private Land Ownership

COMaP v7 2008. Larimer County 2005. The Nature Conservancy 2010.

- TNC - fee
- Conservation Easements
- Abbey of St. Walberga (Conserved)



1:210,000

Projection: UTM Zone 13 NAD 83

0 0.75 1.5 3 Miles

0 2 4 8 Kilometers

Map produced by The Nature Conservancy in Colorado
LaramieFoothillsProtected_2010.mxd (v20100405)

Lessons from Question #1

- ✓ cross boundaries & whole systems
- ✓ ask heartfelt questions
- ✓ see challenges as opportunities
- ✓ focus on a common vision
- ✓ collaborate & innovate
- ✓ follow through

Question #2

What is our biggest challenge to achieving conservation outcomes?

ECOSYSTEM MANAGEMENT

Adaptive,
Community-Based
Conservation



Experiences in Ecosystem Management:

If All It Took Was Money, Community-Based Conservation Would Be Easy



Heather A. L. Knight



Gary K. Meffe
Larry A. Nielsen
Richard L. Knight
Dennis A. Schenborn





Lessons from Question #2

- it's about people
- listening & telling stories
- building relationships founded on trust
- being humble
- starting small, then scaling up
- celebrating success, giving away credit

Question #3

What is the biggest barrier we can remove to enable others to innovate, adopt and implement new management approaches?



Final Lessons

- ❖ taking calculated risk
- ❖ using a co-learning & an experimental approach
- ❖ building on successes
- ❖ but not repeating failures



**If you want to go fast,
Go Alone.**

**If you want to go far,
Go Together.**